

Permit Required Confined Space

Monday & Tuesday
April 10th & 11th, 2023

Company/System: _____

Name: _____

Address: _____

City: _____

State: _____ Zip: _____

Contact #: _____

Email: _____

Please check all licenses and/or categories
that apply:

Water Operator Wastewater

Other system personnel *Please List*

**** Please Register In Advance ****

Send your registration to:

Delaware Rural Water Association

210 Vickers Drive, Milford, DE 19963

Phone: 302-424-3792 / Fax: 302-424-3790

Email: delawareruralwater@yahoo.com

Complete Form & Return

DELAWARE RURAL WATER ASSOCIATION CORPORATE SPONSORS



**This Course Is Funded By:
DHSS SRF**

PLEASE NOTE: CLASS LIMIT IS 24

Delaware Rural Water Association Presents:

Permit Required Confined Space Monday & Tuesday April 10th & 11th, 2023

This course will focus on OSHA 1910.146 confined space as well as 1910.147 lock out tag out requirements. The classroom instruction (Day 1) will include a Power Point presentation along with breakout sessions demonstrating equipment. During the hands on portion (Day 2) attendees will participate in actual entries - vertical, horizontal, etc.



Time: 8:00 a.m. - 4:30 p.m. Daily
ECH's: 16.0 Hrs. - W Direct & WW
Location: Rehoboth Beach Convention Center
229 Rehoboth Beach Avenue
Rehoboth Beach, DE 19971
Cost: FREE - Funded By DHSS SRF
Instructors: Chuck Snyder, Bruce Galloway

Wayne Hutchison

www.drwa.org

About DRWA

Mission Statement

The mission of the Delaware Rural Water Association (DRWA) is to improve the quality of utility services for rural Delaware while protecting our natural resources.

To accomplish this mission and to protect the quality of life in rural Delaware, the Delaware Rural Water Association was incorporated in 1990 as a non-profit association. A volunteer Board of Directors that include water operators, town managers, and supervisors throughout the state of Delaware governs.

Protecting the Public Health

DRWA promotes public health protection for rural communities and small municipalities. The Association trains and assists rural and small community water professionals in their efforts to provide quality drinking water to their communities, neighbors, and families.

Protecting the Environment

DRWA promotes water conservation and protection through publications and public awareness campaigns. Information and research provided to government officials aid in the development of effective regulations. DRWA is an affiliate of the National Rural Water Association who operates what EPA officials call "the most successful groundwater protection program in the country".



Training

Specialized training sessions provide water professionals with an opportunity to resolve problems by sharing ideas with state and federal agencies, engineers, contractors, manufacturers, suppliers, and other water system personnel. Training sessions cover a broad spectrum of needs. Subjects range from water treatment and federal water and wastewater regulations to financial management practices and operator certification. The training allows water professionals to upgrade their skill, improve the quality of their utility's service, and protect their community's health.

DRWA's Annual Technical Conference and Exhibition draws water and wastewater professionals, government officials, manufacturers, and suppliers together in one location, allowing them to participate in specialized training and the ability to learn about the latest trends in technology, government regulations, and system management techniques.

DRWA's On-Site Training Unit (OSTU) was developed in cooperation with the Office of Drinking Water and funded through an EPA grant. The unit has classroom space, resource materials, and industry equipment. DRWA has traveled around the state to operators who can't leave their systems to attend training. Hands-on training has been provided for water testing, meter testing, cross-connection, fluoridations, well security and more.

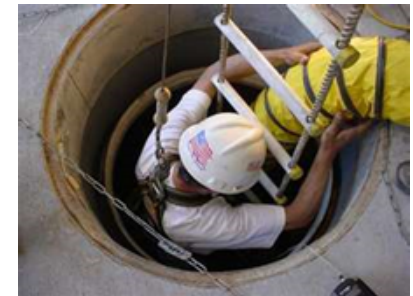
Agenda

**Monday, April 10th 2023
&
Tuesday, April 11th 2023**

This two (2) day course will cover entry, retrieval, monitoring ventilation, permitting and PPE requirements for safe and successful confined space work. The responsibilities of the entrant, attendant and supervisor are also introduced and reviewed with respect to the above areas.

All attendees are asked to bring safety glasses, safety shoes, gloves and hard hat.

Please note that you must attend both days to receive ECH's as partial credit will not be given.



For more classes and information visit us at www.drwa.org